

DR. ABDUL REHMAN

**LECTURER PATHOLOGY DEPARTMENT
SMC**

Giardia Lamblia

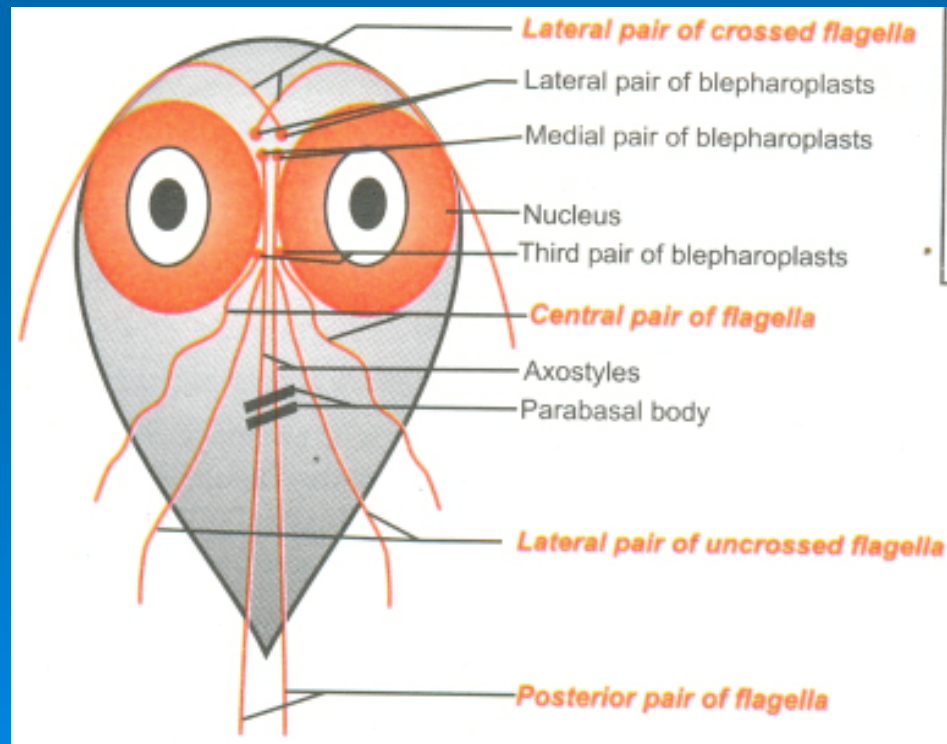


Table 2.1. Classification of protozoa

Phylum	Subphylum	Superclass	Class	Order	Genus
Sarcomastigophora	Mastigophora		Kinetoplastidea	Trypanosomatida	<i>Leishmania</i> <i>Trypanosoma</i>
				Retortamonadida	<i>Retortamonas</i> <i>Chilomastix</i>
				Enteromonadida	<i>Enteromonas</i>
				Diplomonadida	<i>Giardia</i>
				Trichomonadida	<i>Trichomonas</i> <i>Dientamoeba</i>
	Sarcodina	Rhizopoda	Lobosea	Euamoebida	<i>Entamoeba</i> <i>Endolimax</i> <i>Iodamoeba</i>
				Amoebida	<i>Acanthamoeba</i> <i>Balamuthia</i>
				Schizopyrenida	<i>Naegleria</i>

Table 4.1. Flagellates

Group	Parasites	Habitat
Intestinal, oral and genital flagellates	<i>Giardia lamblia</i>	Duodenum and jejunum
	<i>Trichomonas vaginalis</i>	Vagina and urethra
	<i>T. tenax</i>	Mouth
	<i>T. hominis</i>	Caecum
	<i>Chilomastix mesnili</i>	Caecum
	<i>Enteromonas hominis</i>	Colon
	<i>Retortamonas intestinalis</i>	Colon
	<i>Dientamoeba fragilis</i>	Caecum and colon

CONTENTS OF DISCUSSION

- History
- Geographical distribution
- Morphology
- Modes of infection
- Life cycle
- Effect of parasite:
 - pathogenic lesions (gross & micro)
 - clinical manifestations (i.e. symptoms & signs Hx & exam)
- Immunologic responses diagnosis (Dx)
- Therapy for specific eradication of parasitic infection (Tx)
- Prophylactic measures for prevention

PROTOZOA

- Antony van Leeuwenhoek (1632-1723) invented the first magnifying glass. He had no fortune and received no higher education or university degrees.
- A Dutch tradesman van Leeuwenhoek is known as the “Father of Microbiology”. He made this first known observation of *Giardia intestinalis*



VILEM LAMBL

- In 1859, a Czech physician named Vilem Lambl observed *G. intestinalis* in the stools of children with diarrhea
- The species was then named *Giardia lamblia* in his name.



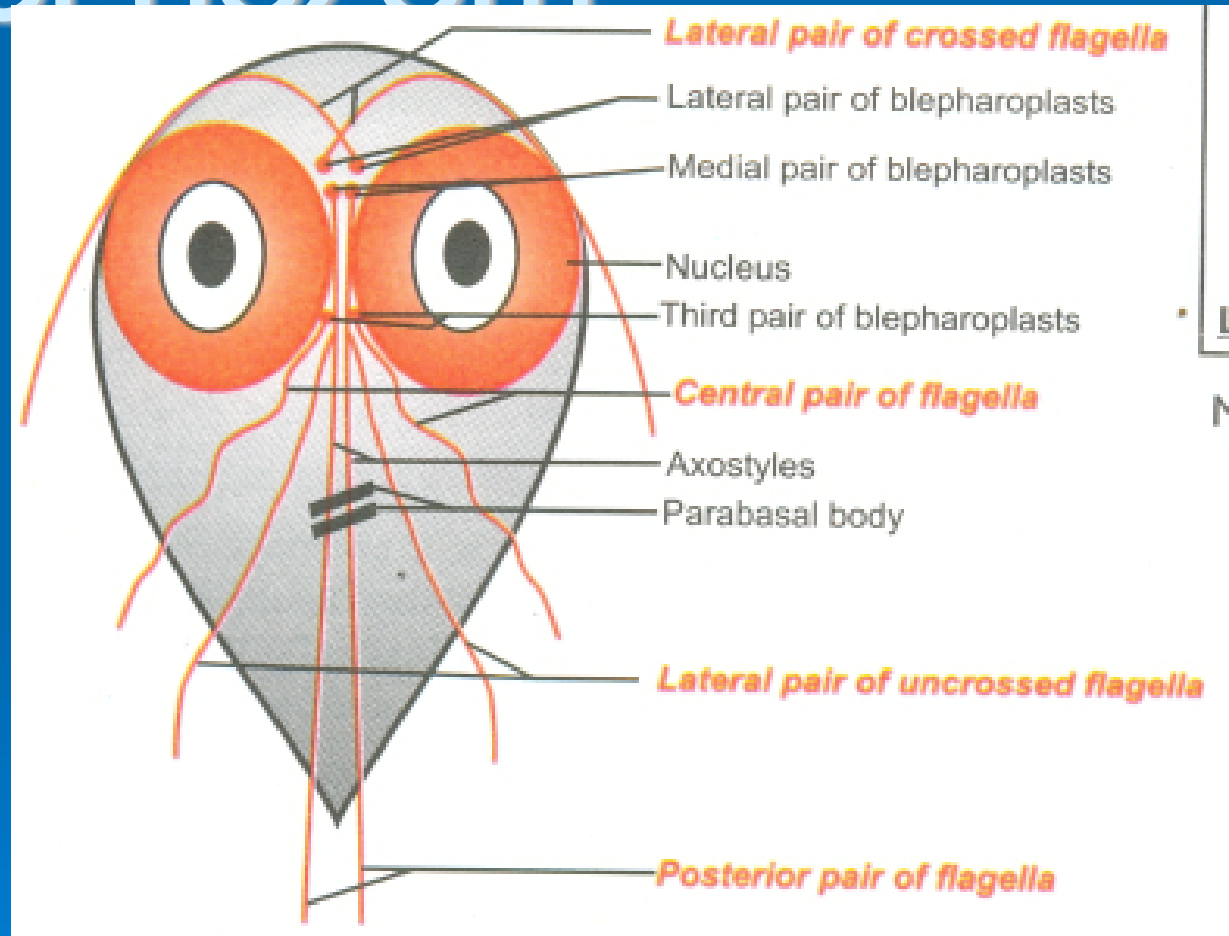
MORPHOLOGY

TROPHOZOITE

➤ Shape:

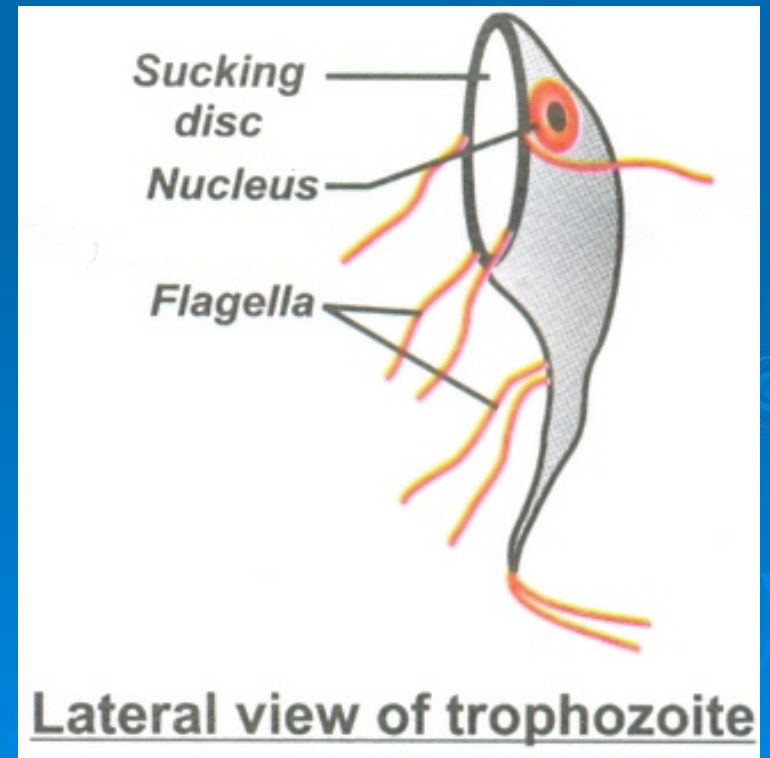
➤ Size:

➤ Body:



Axostyles

- 2 in number, seen in midline as vertical lines,
- Nuclei:
- Flagella:
- Sucking disc on ventral aspect



TROPHOZOITES

