

# NOMENCLATURE OF TUMORS

**BENIGN**

**Mesenchymal**

**Epithelial**

**SUFFIX “ Oma”**

**On the basis of app**

**On the basis of cell of origin**

# NOMENCLATURE OF MALIGNANT TUMORS

**MESENCHYMAL**

**EPITHELIAL**

**SARCOMAS**

**CARCINOMAS**

**ON THE BASIS OF APP.**

**ON THE BASIS OF CELLS  
OF ORIGIN**

**TABLE 7-1 Nomenclature of Tumors**

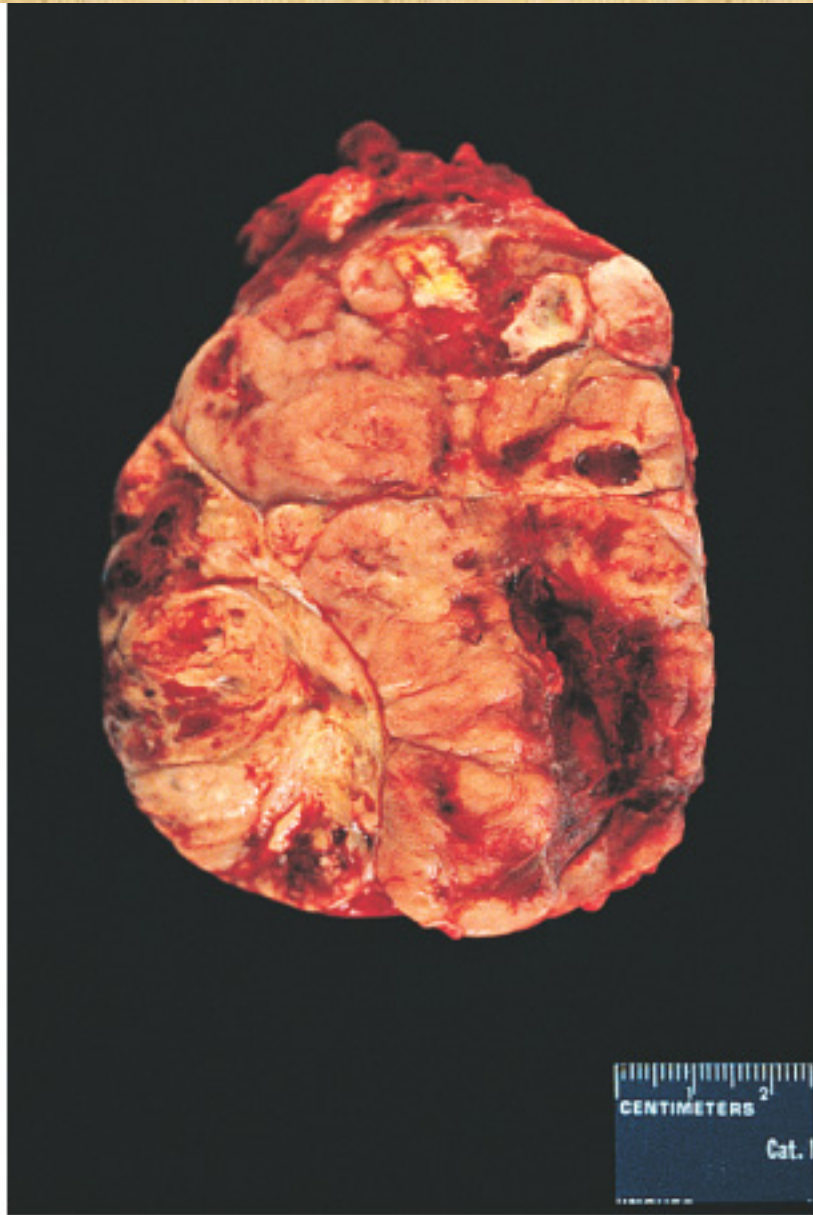
Tissue of Origin	Benign	Malignant
<b>Composed of One Parenchymal Cell Type</b>		
Tumors of mesenchymal origin Connective tissue and derivatives	Fibroma Lipoma Chondroma Osteoma	Fibrosarcoma Liposarcoma Chondrosarcoma Osteogenic sarcoma
Endothelial and related tissues Blood vessels Lymph vessels Synovium Mesothelium Brain coverings	Hemangioma Lymphangioma  Meningioma	Angiosarcoma Lymphangiosarcoma Synovial sarcoma Mesothelioma Invasive meningioma
Blood cells and related cells Hematopoietic cells Lymphoid tissue		Leukemias Lymphomas
Muscle Smooth Striated	Leiomyoma Rhabdomyoma	Leiomyosarcoma Rhabdomyosarcoma
Tumors of epithelial origin Stratified squamous Basal cells of skin or adnexa Epithelial lining of glands or ducts	Squamous cell papilloma  Adenoma Papilloma Cystadenoma Bronchial adenoma Renal tubular adenoma Liver cell adenoma Transitional cell papilloma Hydatidiform mole	Squamous cell or epidermoid carcinoma Basal cell carcinoma Adenocarcinoma Papillary carcinomas Cystadenocarcinoma Bronchogenic carcinoma Renal cell carcinoma Hepatocellular carcinoma Transitional cell carcinoma Choriocarcinoma Seminoma Embryonal carcinoma
Tumors of melanocytes	Nevus	Malignant melanoma
<b>More Than One Neoplastic Cell Type—Mixed Tumors, Usually Derived from One Germ Cell Layer</b>		
Salivary glands	Pleomorphic adenoma (mixed tumor of salivary origin)	Malignant mixed tumor of salivary gland origin
Renal anlage		Wilms tumor
<b>More Than One Neoplastic Cell Type Derived from More Than One Germ Cell Layer—Teratogenous</b>		
Totipotential cells in gonads or in embryonic rests	Mature teratoma, dermoid cyst	Immature teratoma, teratocarcinoma

# CANCER

- Malignant tumors are collectively referred to as *cancers* , derived from the Latin word for crab , because they adhere to any part that they seize on in an obstinate manner, similar to a crab







**Leiomyoma of the uterus.** This benign, well-differentiated tumor contains interlacing bundles of neoplastic smooth muscle cells that are virtually identical in appearance to normal smooth muscle cells in the myometrium.

