

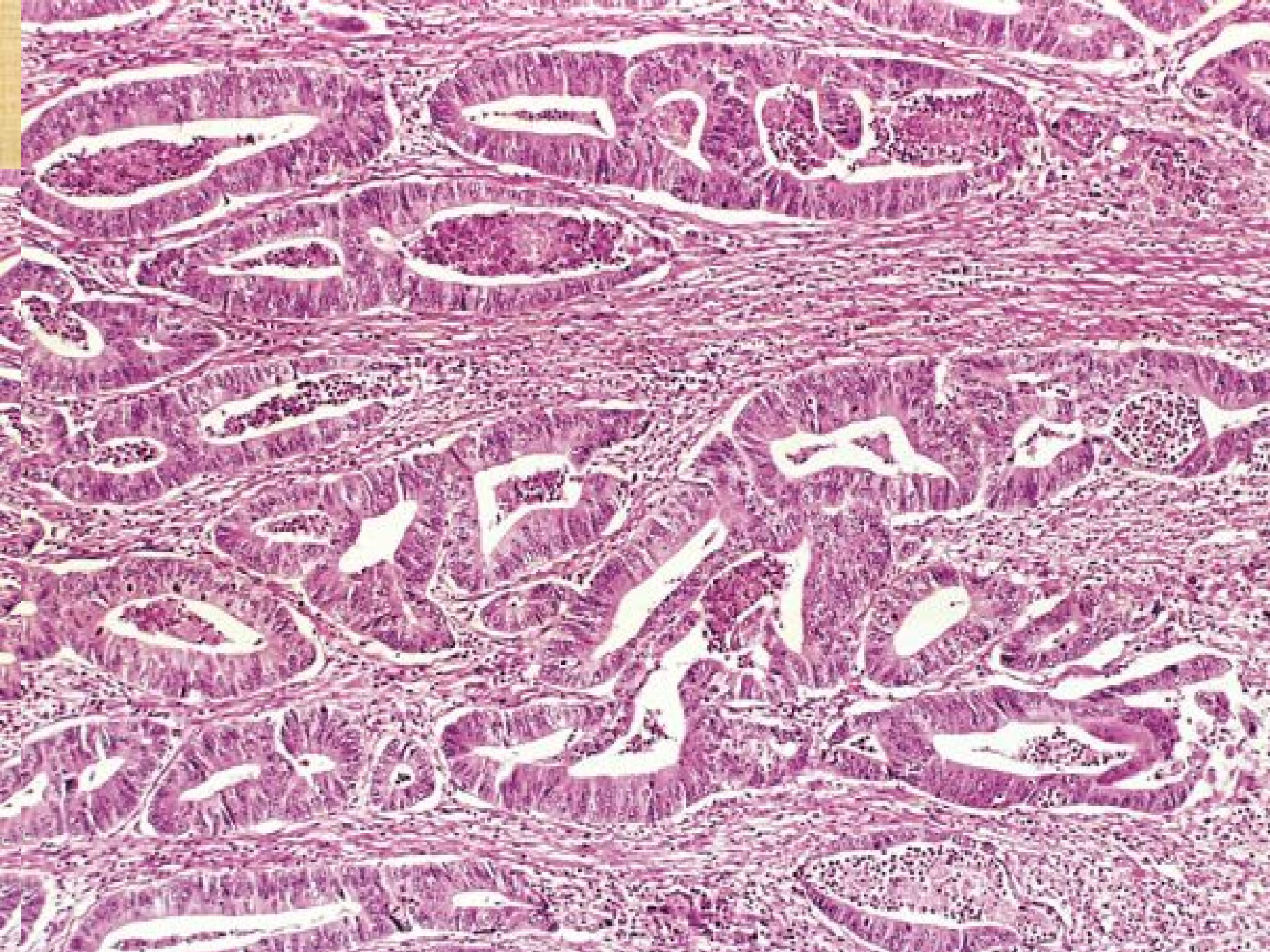






Components Of Benign And Malignant Tumors

1. Parenchyma
2. Stroma



Components Of All Benign And Malignant Tumors

- ① (1) parenchyma Clonal neoplastic cells constitute parenchyma
- ② (2) Stroma made up of connective tissue, blood vessels, and variable numbers of macrophages and lymphocytes.
- ③ Neoplastic cells largely determine a tumor's behavior, their growth is dependent on stroma. Adequate stromal blood supply is requisite for the tumor cells to live and divide, and the stromal connective tissue provides structural framework essential for the growing cells..



*“Beware of this world, for
it is sweet and tempting.”*

Control your desires.

— alsunna