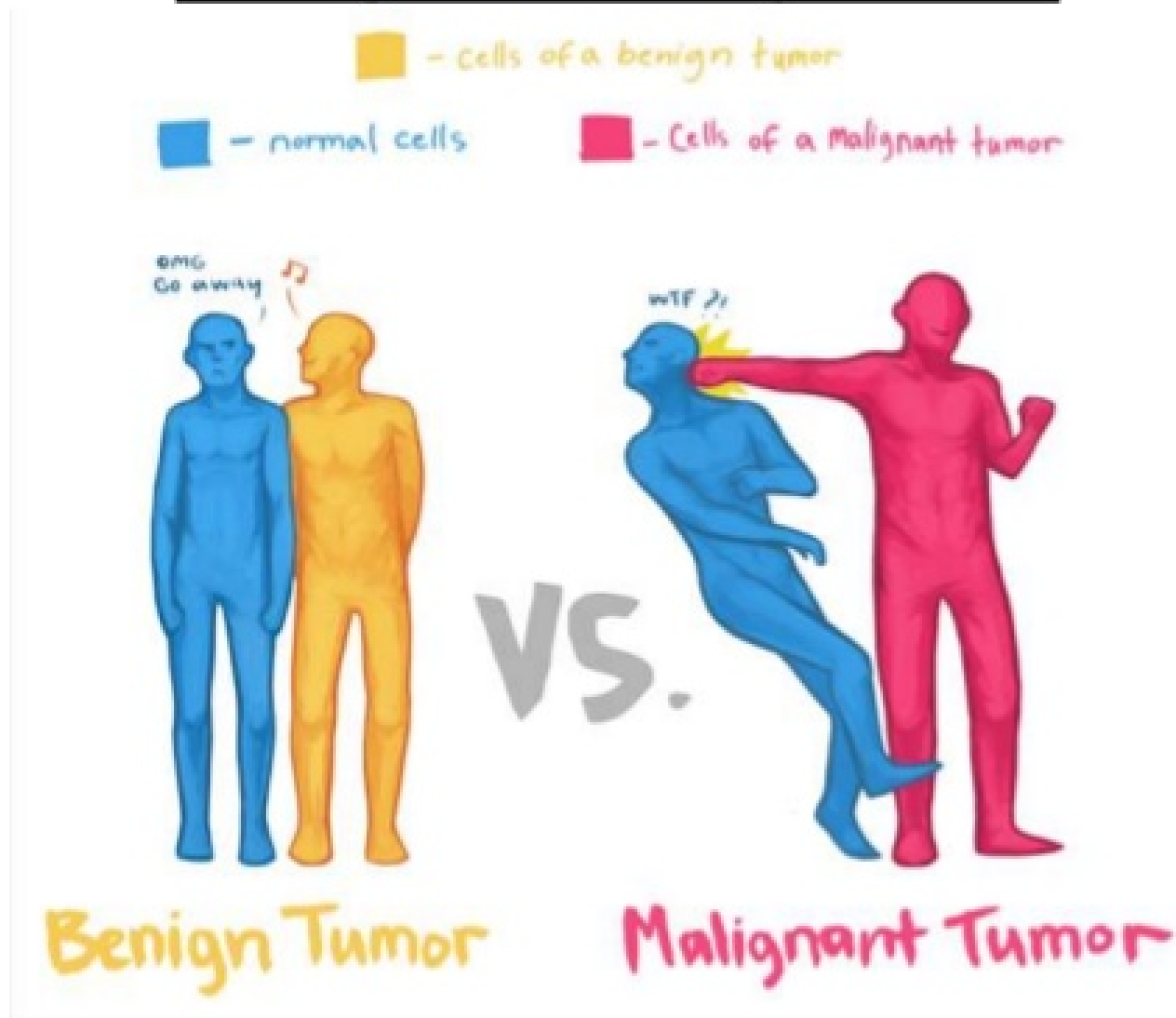


Differences between benign and malignant neoplasms



CONSTRASTING FEATURES OF BENIGN & MALIGNANT TUMORS

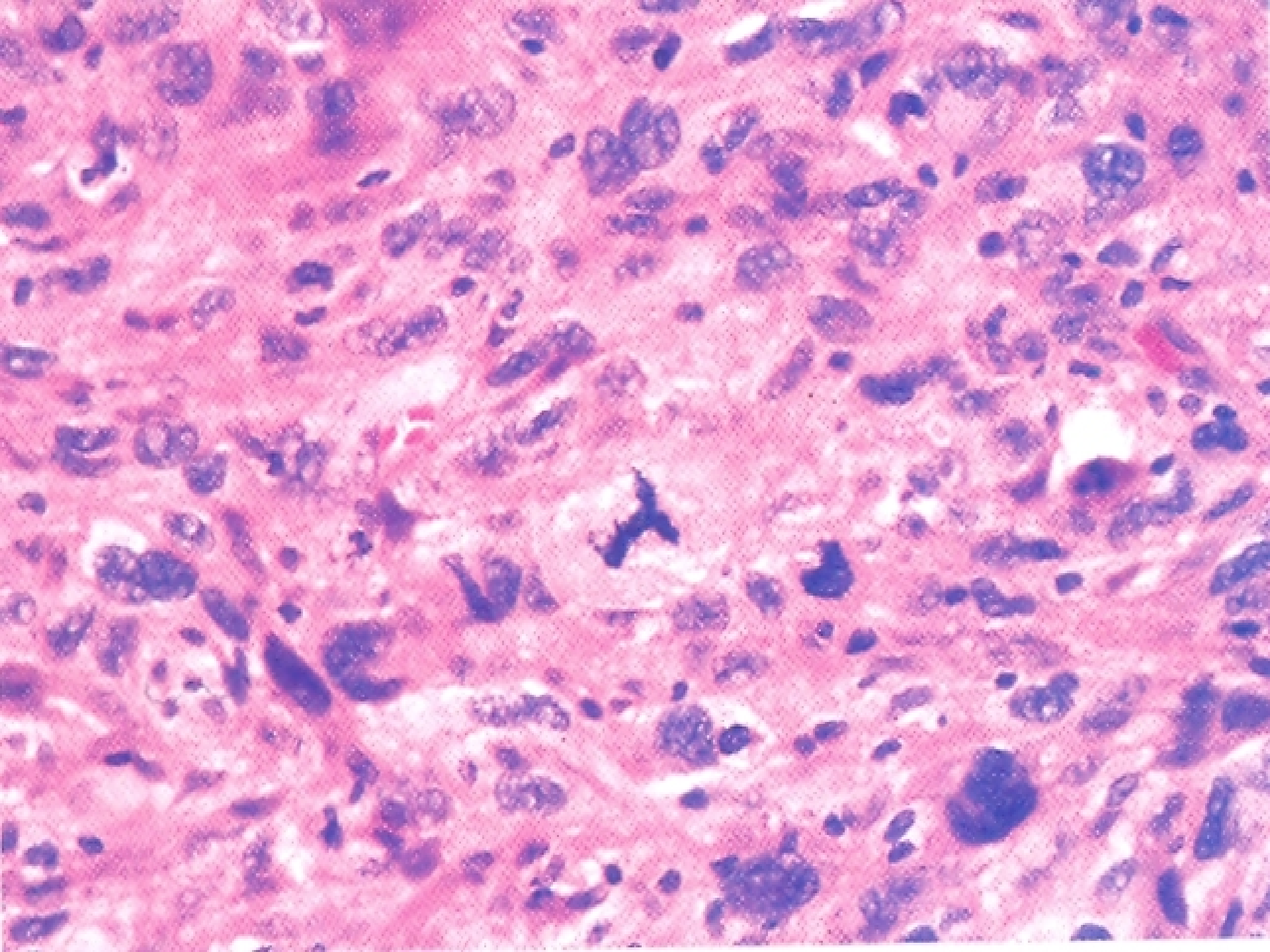
Contrasting Features Of Benign & Malignant Tumors

① I. Clinical & Gross Features

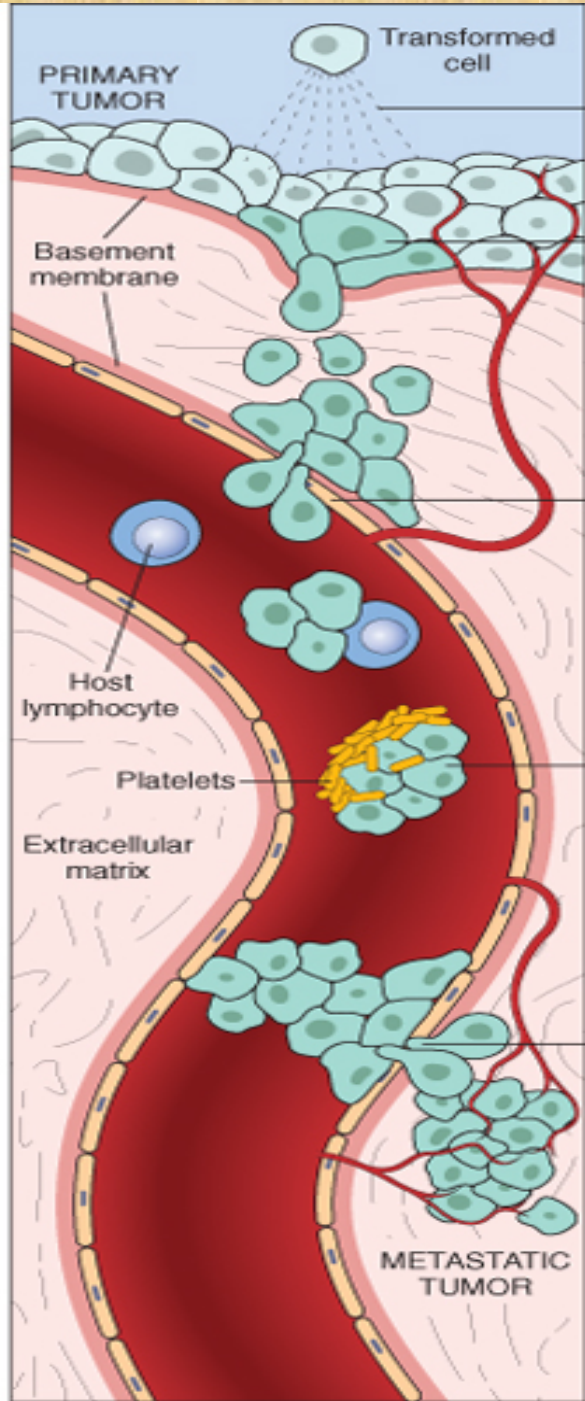
1. Boundries
2. Surrounding Tissue
3. Size
4. Secondary Changes

II. Microscopic Features

1. Pattern or Resemblance
2. Basal Polarity
3. Pleomorphism
4. Hyperchromatism
5. N/C Ratio
6. Anisonucleosis
7. Prominent Nucleoli
8. Mitoses
9. Tumor Giant Cells
10. Function



1. **Gross/Clinical Features**
2. **Microscopic Features**
3. **Growth Rate**
4. **Local Invasion**
5. **Metastasis**
6. **Prognosis**



Clonal expansion,
growth, diversification,
angiogenesis

Metastatic subclone

Adhesion to and
invasion of basement
membrane

Passage through
extracellular matrix

Intravasation

Interaction with host
lymphoid cells

Tumor cell
embolus

Adhesion to
basement
membrane

Extravasation

Metastatic
deposit

Angiogenesis

Growth

clonal growth

metastatic subclone

intravasation

tumor cell embolus

extravasation