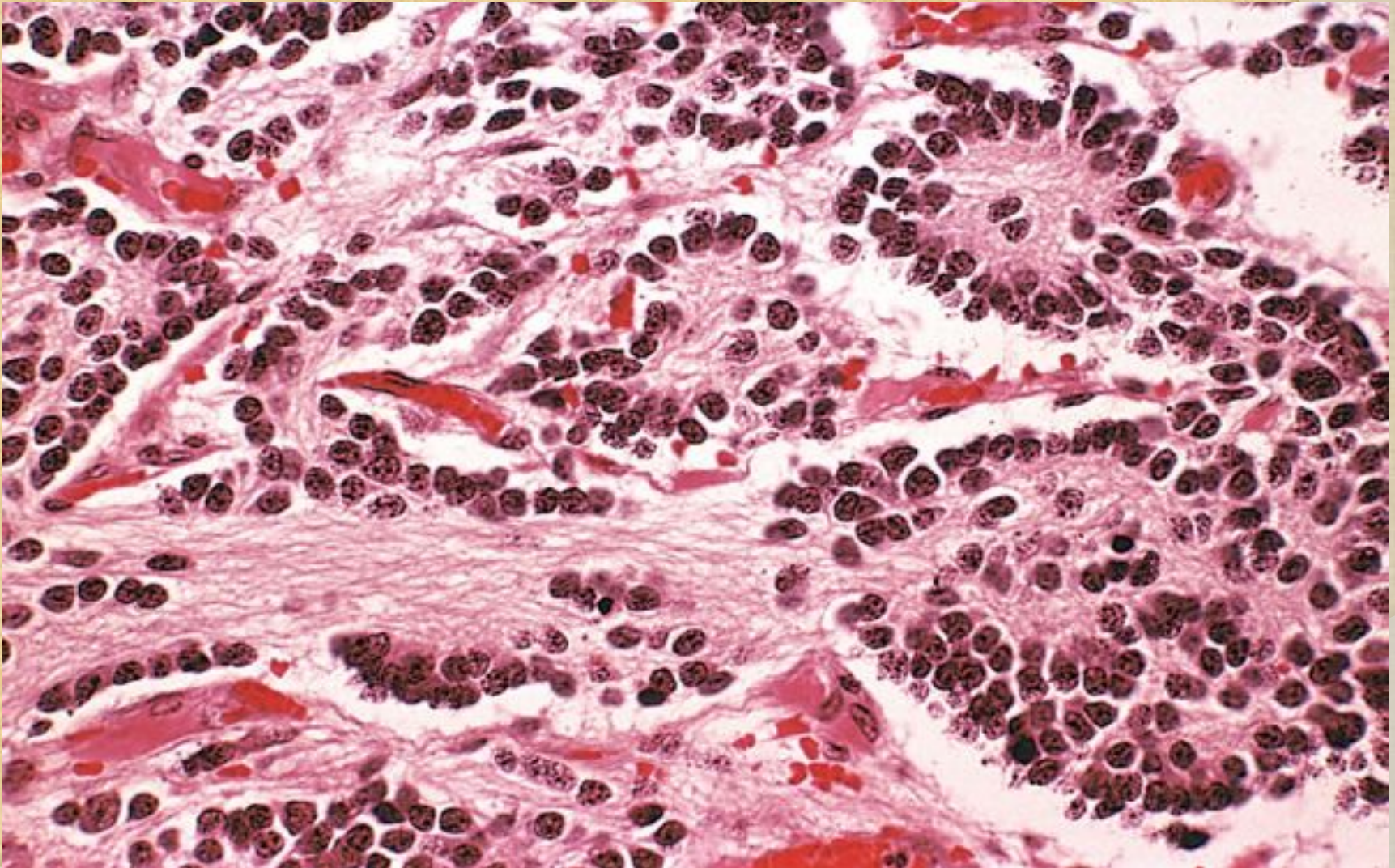


Neuroblastoma. This tumor is composed of small cells embedded in a finely fibrillar matrix.



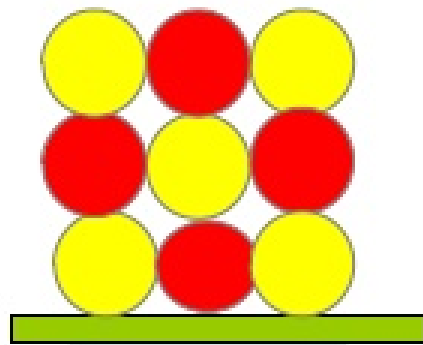
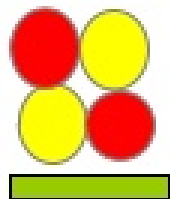
MONOCLONALITY

- ◎ **The entire population of neoplastic cells within an individual tumor arises from a single cell that has incurred genetic change, and hence tumors are said to be monoclonal.**



Growth Disorders:

Non neoplastic
(Polyclonal)

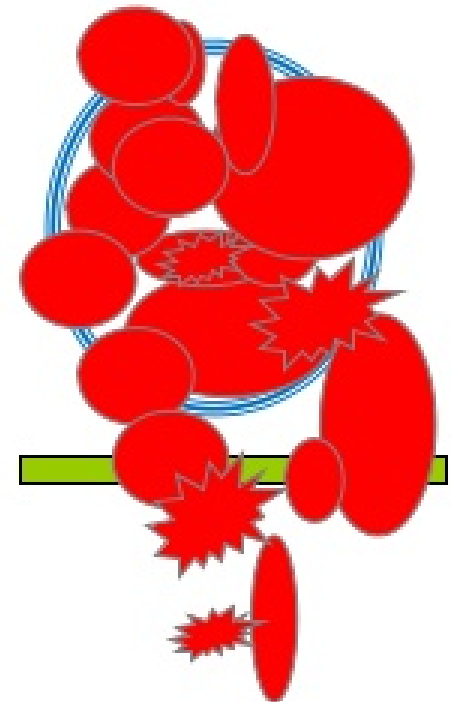
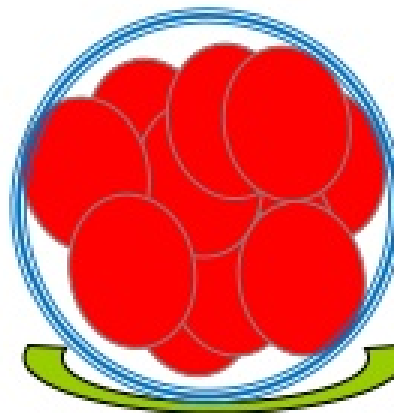


- Hyperplasia
- Hypertrophy
- Aplasia
- Atrophy
- Metaplasia
- Dysplasia

Normal

Adaptation

Neoplastic
(Monoclonal)



Benign

Malignant

- ◎ Neoplasms are of monoclonal origin. Infrequently, divergent differentiation of a single neoplastic clone along two lineages creates what are called *mixed tumors* .

EXCEPTIONS

- ① Melanoma
- ① Lymphoma
- ① Hepatoma
- ① Mesothelioma

NOMENCLATURE OF SPECIAL TUMORS

- ◎ **MIXED TUMORS:** More than one type of cells derived from same germ layer
- ◎ **TERATOMAS**
- ◎ **HAMARTOMAS:** Disorganized overgrowth of mature cells indigenous to that part
- ◎ **CHORISTOMA:** Presence of well developed & normally organized tissue of one organ in another

