

# ENTEROBIUS VERMICULARIS

---

# CLINICAL PROBLEM

---

- ⊠ Muddasar, 6 year old boy wakes up at night because his perianal area is itching. In “scotch tape” preparation, eggs of the worm are seen
- a) What is the most likely causative organism and diagnosis.
- b) How will you work up in lab for confirmation of your diagnosis.

- ⊠ Threadworm
- ⊠ Pinworm
- ⊠ Seatworm



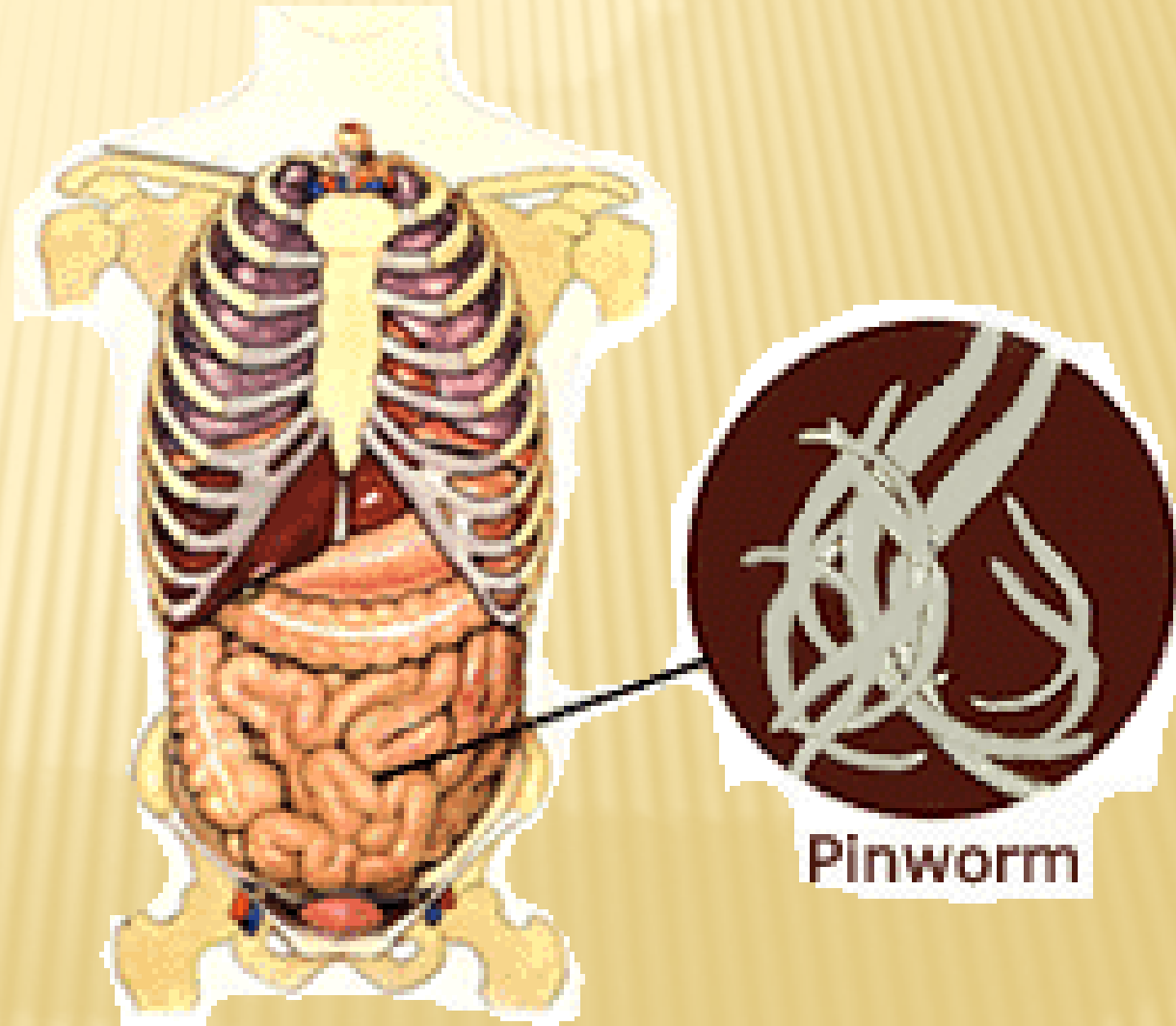
## HISTORY OF DISCOVERY

- ⊠ Leukart in 1865



# HABITAT

- ☒ Caecum
- ☒ Appendix
- ☒ Ascending colon

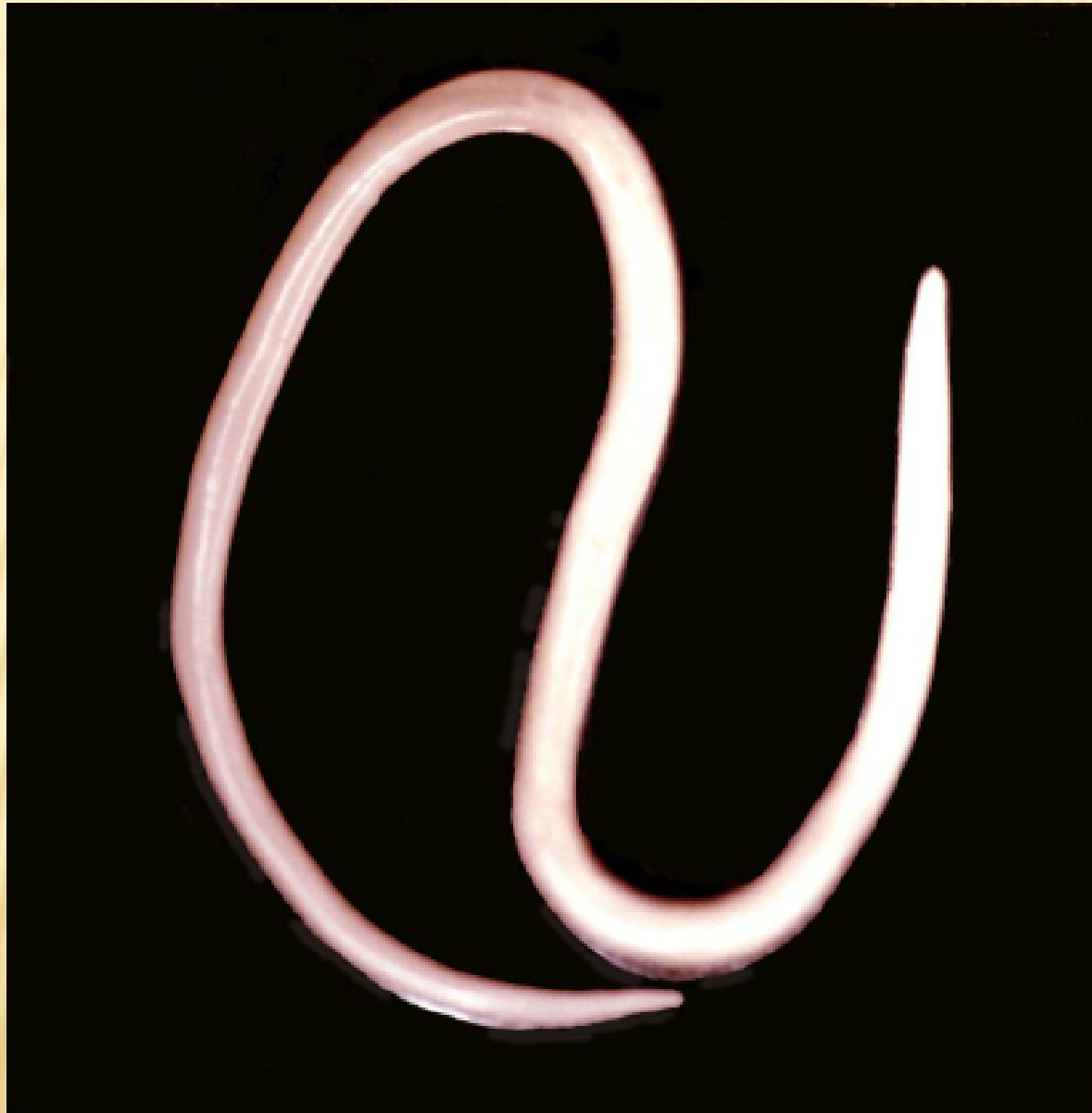


# MORPHOLOGY

---

## ADULT WORMS

- ⊠ Size
- ⊠ Colour
- ⊠ Shape
- ⊠ Cervical alae
- ⊠ Pin like tail
- ⊠ Life span





# EGGS

- ☒ Colourless
- ☒ Planoconvex
- ☒ Size
- ☒ Shell
- ☒ Larvae

***Enterobius vermicularis***

**egg**



**(by P.W. Pappas and S.M. Wardrop)**

# LIFE CYCLE

